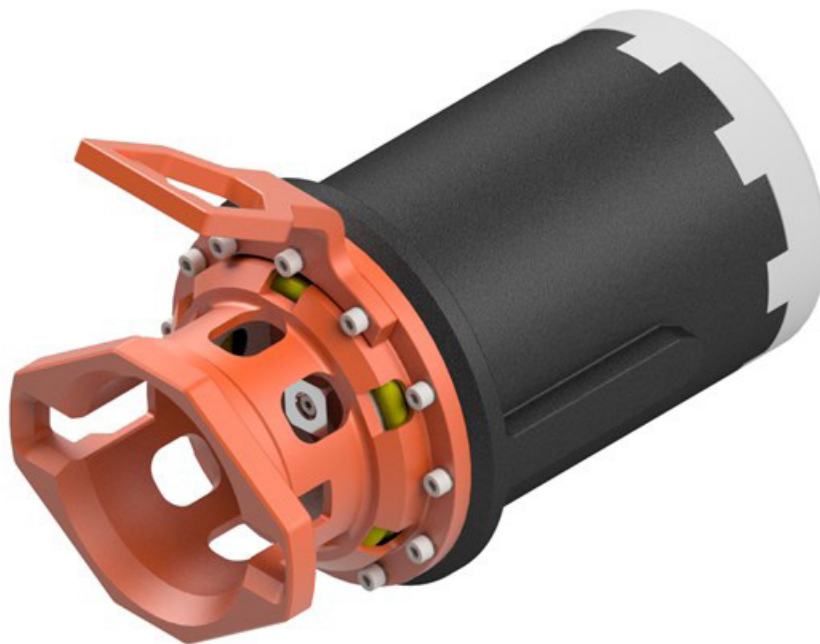


# TORQUE GEARBOX CLASS 6-7

ISO CLASS 4 INPUT  
CLASS 6-7 OUTPUT  
40 KNM TORQUE OUTPUT



## Description

**The Class 6-7 Gearbox is designed to enable operation of Class 6 and Class 7 interfaces using a Class 4 torque tool for maximum flexibility at minimum cost.**

The Gearbox can be configured for both short- and long Class 7 interface, in addition to Class 6 using a square insert.

The Gearbox is delivered as a complete kit including required components to adapt the tool to the interfaces as described above. Maximum output is 40 kNm.

## Features

- Compact design
- Low weight, 57 kg in water
- Maximum water depth 3000 meter
- Modular gear to fit different output ranges
- 10 kNm Gear ratio 1:3,78
- 15 kNm Gear ratio 1:6
- 40 kNm Gear ratio 1:14

# SPECIFICATIONS

## CLASS 6-7 GEARBOX

### General Technical Specifications

|                             |                   |
|-----------------------------|-------------------|
| Type                        | Class 6-7 Gearbox |
| Part Number                 |                   |
| Dimensions                  | mm Ø280 x L718 mm |
| Weight (in air / submerged) | kg ~71 / ~57      |

### Torque

|                    |           |
|--------------------|-----------|
| Max. Input torque  | Nm 2700   |
| Max. Output torque | Nm 40.000 |

### General Features

|              |          |
|--------------|----------|
| Depth rating | MSW 3000 |
|--------------|----------|

