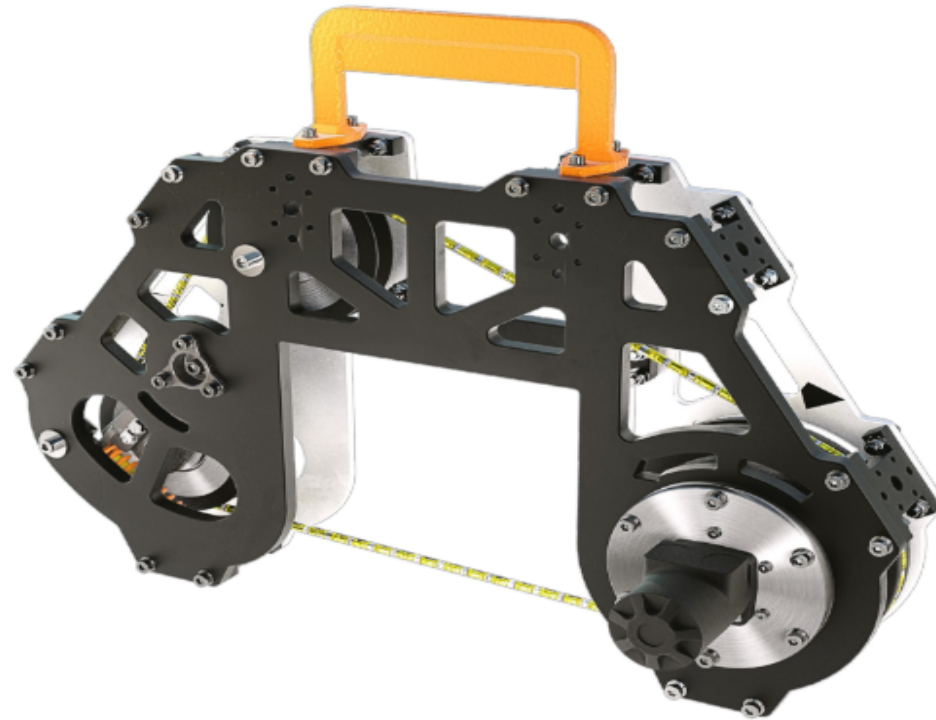


DIAMOND WIRE SAW 0-320 MM

ROV INTERVENTION
DIAMOND CUTTING
USER-FRIENDLY



Description

Manipulator held utility saw with long track record.

Diamond Wire Saw with a range up to 320mm. Within capacity for most Work Class ROV's. Track record after years of use in the North Sea. The saw is designed to cut steel pipes, steel profiles and wires.

Typical Operations

- Cutting Operations

Features

- Maximum cutting 320 mm
- Small footprint
- ROV friendly cutting tool
- Multipurpose use
- Low weight

SPECIFICATIONS

DIAMOND WIRE SAW 0-320 MM

General Technical Specifications

Type	Daimond Saw 0-320 mm
Part Number	104615
Dimensions L x W x H	754 mm x 716 mm x 293 mm
Weight in air / submerged	~42 / ~47 kg

Hydraulic

Max Input Pressure	103 Bar
Max Input Flow	45 L/min
Max Rotation Speed	969 Rpm

Recommended Feeding Speed 10-15 mm/min

Connection ROV Pressure A JIC #6
Connection ROV Pressure B JIC #6

Technical

Depth Rating MSW 3000

