

# DIRTY WORK PACK 28CC REXROTH

210 BAR

70 LPM

EFFICIENCY RATED TO 66%



## Description

**210 Bar Dirty work pack is compact, simple to incorporate and service friendly. Contains well proven components integrated and all hydraulic connections is located in one end.**

The motor circuit on the DWP has a built-in start/ stop valve for remote start/stop and has a flow regulator valve for speed control. The pump circuit has a built-in pressure relief valve.

The pump can be internally pressure compensated, remote pressure regulated or connected to a load sensing valve system. Soft-start function integrated to always ensure fully utilization.

## Features

- 210 Bar pump supply
- 70 L/min pump flow
- Integrated flow control valve
- Integrated start/stop valve
- Integrated soft-start function
- Rated to 3000 MSW
- Bulkhead connection
- Efficiency is rated to 66%

□ The specification details are illustrative for marketing purpose only. Actual equipment may be different as a result of product improvement or other reasons. Specific interface and performance information should be reconfirmed at time of order placement. Envirent AS, Robotvegen 16, 4340 Bryne, +47 477 77 500, sales@envirent.no

# SPECIFICATIONS

## DIRTY WORK PACK 28cc

### General Technical Specifications

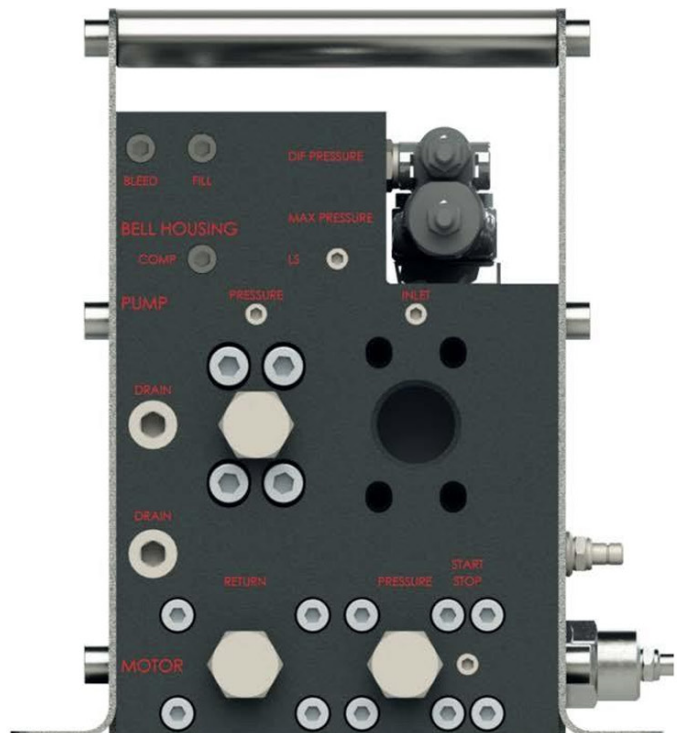
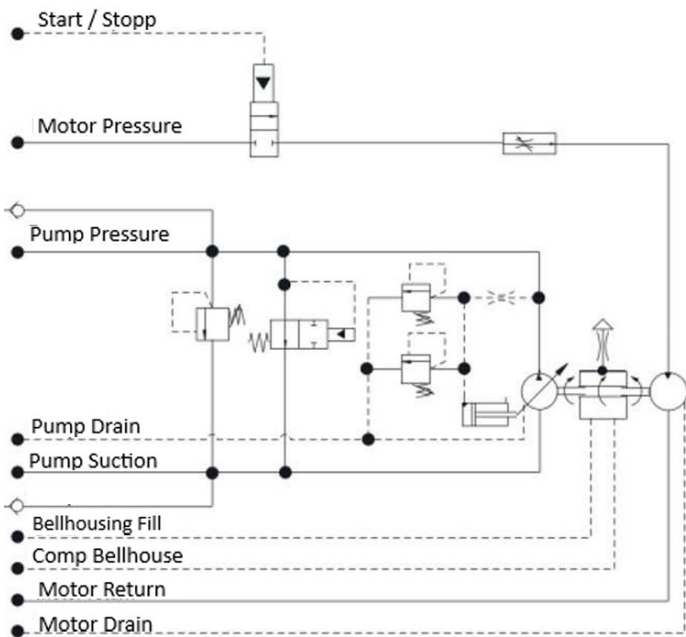
Type	Dirty Work Pack
Part Number	DWP-REX
Dimensions L x W x H	590 mm x 350 mm x 250 mm
Weight in air / submerged	~65 kg / ~55 kg
Depth Rating	3000 MSW
Fluid Compability	Pump= Mineral Oil/Water Based Motor= Mineral Oil

### Hydraulic Specifications

Max. Input Pressure	210 Bar
Max. Output Pressure	210 Bar
Max. Input Flow	90 L/min
Max. Output Flow	70 L/min
Pressure vs Flow @ 210bar & 90 L/min input	- 1 L/min @ 220 Bar - 40 L/min @ 210 Bar - 60 L/min @ 160 Bar - 70 L/min @ 80 Bar

### Hydraulic Interface

Connection ROV Pressure	JIC 8
Connection ROV Return	JIC 12
Connection ROV Drain	JIC 6
Connection ROV Start/stop	JIC 4
Connection DWP Supply	JIC 8
Connection Case Drain	JIC 6
DWP Suction	1-1/4" BSP
Connection DWP Ext Regulator	1/8" NPT
Connection Bellhouse Fill	3/8" Swagelock Female Quick Connector



■ The specification details are illustrative for marketing purpose only. Actual equipment may be different as a result of product improvement or other reasons. Specific interface and performance information should be reconfirmed at time of order placement. Envirent AS, Robotvegen 16, 4340 Bryne, +47 477 77 500, sales@envirent.no

# SPECIFICATIONS

## DIRTY WORK PACK 28cc

### Inventory List:

Items listed in Inventory List are delivered with the equipment as standard. Any additional equipment must be specified upon order.

Item	Description	Total Qty
1.	Hydraulic Hose 1/2" Jic 8 Fm – Fm, 4m. SS (Pressure)	1
2.	Hydraulic Hose 3/8" Jic 6 Fm – Fm, 4m. SS (Drain)	1
3.	Hydraulic Hose 3/4" Jic 12 Fm – Fm, 4m. SS (Return)	1
4.	Hydraulic Hose 1/4" Jic 4 Fm – Fm, 4m. SS (Start/Stop)	1