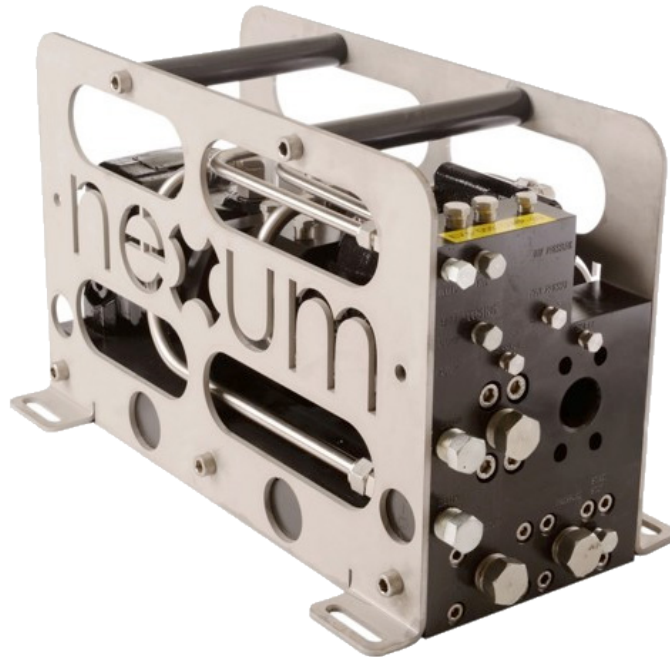


DIRTY WORK PACK

210 BAR PUMP
60 LPM FLOW POWERPACK
EFFICIENCY RATED TO 66%



Description

210 Bar Dirty work pack is compact, simple to incorporate and service friendly. Contains well proven components integrated and all hydraulic connections is located in one end.

The motor circuit on the DWP has a built in start/stop valve for remote start/stop, and has a flow regulator valve for speed control. The pump circuit has a built in pressure relief valve. The pump can be internally pressure compensated, remote pressure regulated or connected to a load sensing valve system. Soft-start function integrated to ensure fully utilization at all times.

Features

- 210 Bar pump supply
- 60 L/min pump flow
- Integrated flow control valve
- Integrated start/stop valve
- Integrated soft-start function
- Rated to 3000 MSW
- Bulkhead connection
- Efficiency is rated to 66%

■ The specification details are illustrative for marketing purposes only. Actual equipment may be different as a result of product improvement or other reasons. Specific interface and performance information should be reconfirmed at time of order placement.

Envirent AS, Hattelandsveien 92, 4353 Klepp Stasjon, +47 477 77 500 post@envirent.no

SPECIFICATIONS

ISOLATED HYDRAULIC POWER UNIT

General Technical Specifications

Type	Isolated Hydraulic Power Unit
Part Number	DWP-REX
Dimensions	mm 590 x 350 x 250
Weight (in air / submerged)	Kg ~65 / ~55

Hydraulic

Max. Input Pressure	Bar 210
Max. Output Pressure	Bar 210
Max. Input Flow	L/min 90
Max. Output Flow @ 210 Bar	L/min 60

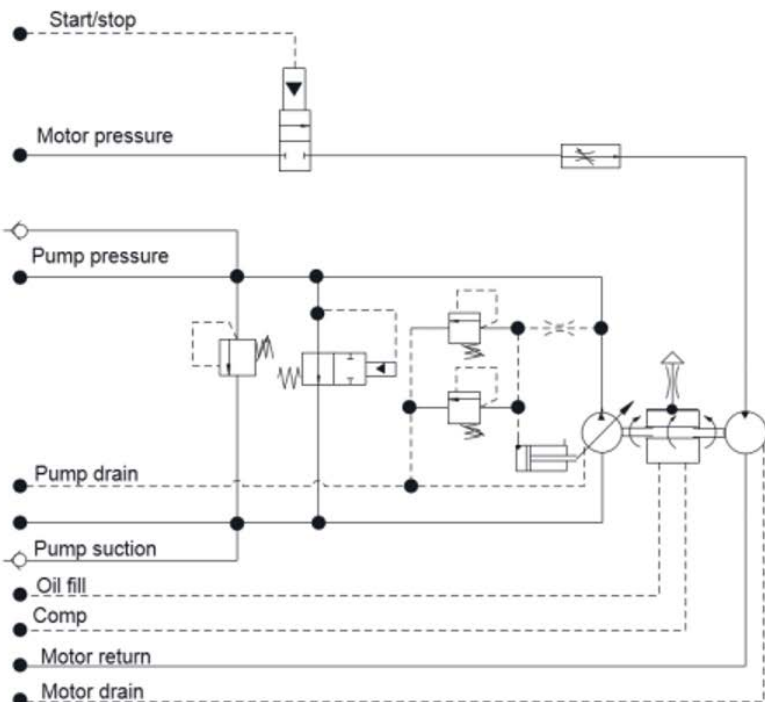
Fluid Compatibility Pump= Mineral oil / Waterbased
Motor= Mineral Oil

Connection ROV pressure	JIC	08
Connection ROV return	JIC	12
Connection ROV drain	JIC	06
Connection ROV start/stop	JIC	04
Connection DWP supply	JIC	08
Connection DWP Case Drain Connection	JIC	06
DWP Suction	BSP	1-1/4"
Connection DWP Ext. Regulator	NPT	1/8"

Connection DWP Bellhousing Fill Swagelock QC6 Female

General Features

Depth rating MSW 3000



■ The specification details are illustrative for marketing purposes only. Actual equipment may be different as a result of product improvement or other reasons. Specific interface and performance information should be reconfirmed at time of order placement.

Envirent AS, Hattelandsveien 92, 4353 Klepp Stasjon, +47 477 77 500 post@envirent.no