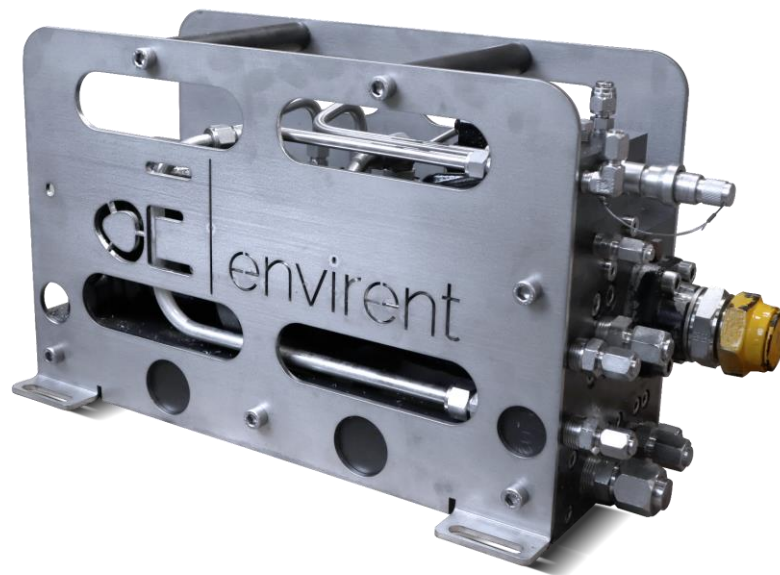


DIRTY WORK PACK

210 BAR PUMP

60 LPM FLOW POWERPACK

EFFICIENCY RATED TO 66%



Description

210 Bar Dirty work pack is compact, simple to incorporate and service friendly. Contains well proven components integrated and all hydraulic connections is located in one end.

The motor circuit on the DWP has a built in start/ stop valve for remote start/stop, and has a flow

regulator valve for speed control. The pump circuit has a built in pressure relief valve. The pump can be internally pressure compensated, remote pressure regulated or connected to a load sensing valve system. Soft-start function integrated to ensure fully utilization at all times.

Features

- 210 Bar pump supply
- 60 L/min pump flow
- Integrated flow control valve
- Integrated start/stop valve
- Integrated soft-start function
- Rated to 3000 MSW
- Bulkhead connection
- Efficiency is rated to 66%

□The specification details are illustrative for marketing purposes only. Actual equipment may be different as a result of product improvement or other reasons. Specific interface and performance information should be reconfirmed at time of order placement.

Envirent AS, Robotvegen 16, 4340 Bryne, +47 477 77 500 post@envirent.no

SPECIFICATIONS

ISOLATED HYDRAULIC POWER UNIT

General Technical Specifications

Type	Isolated Hydraulic Power Unit
Part Number	DWP-REX
Dimensions	mm 590 x 350 x 250
Weight (in air / submerged)	Kg ~65 / ~55

Hydraulic

Max. Input Pressure	Bar 210
Max. Output Pressure	Bar 210
Max. Input Flow	L/min 90
Max. Output Flow	L/min 60

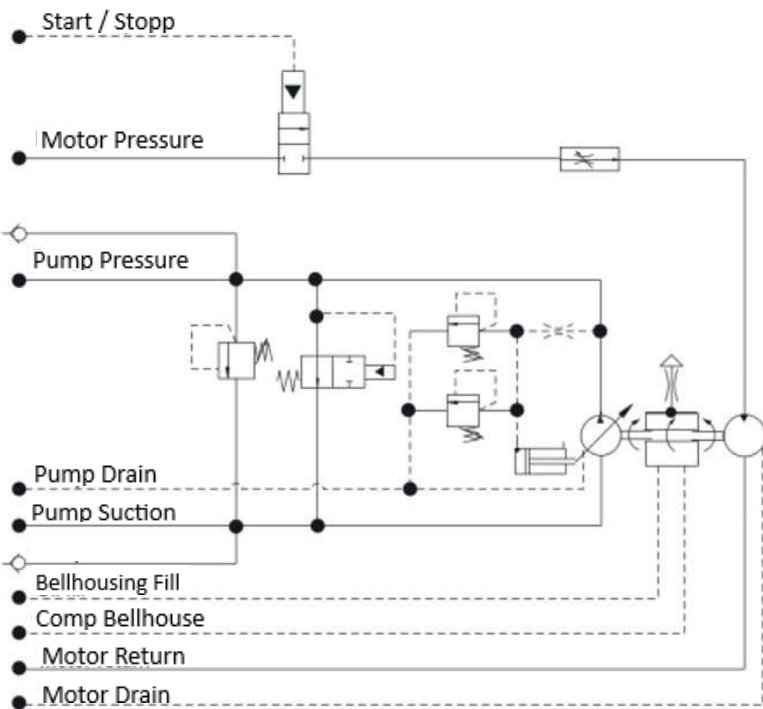
Fluid Compatibility Pump= Mineral oil / Waterbased
Motor= Mineral Oil

Motor Pressure	JIC	08	3/4"
Motor Return	JIC	12	1 1/16"
Motor Drain	JIC	06	9/16"
Start / Stop	JIC	04	7/16"
Pump Pressure	JIC	08	3/4"
Pump Drain	JIC	06	9/16"
Pump Suction	BSP	1-1/4"	
Ext. Regulator for Air Bleed	JIC	04	7/16"

Bellhousing Fill Swagelock QC6 Female
Comp for Bellhouse JIC 04' 7/16"

General Features

Depth rating MSW 3000



□ The specification details are illustrative for marketing purposes only. Actual equipment may be different as a result of product improvement or other reasons. Specific interface and performance information should be reconfirmed at time of order placement.

Envirent AS, Robotvegen 16, 4340 Bryne, +47 477 77 500 post@envirent.no