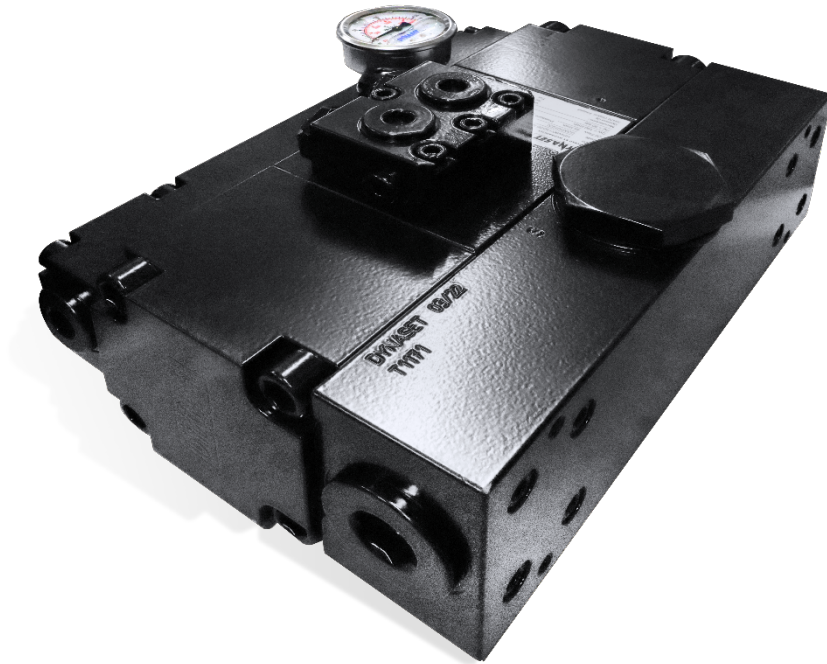


DYNASET HPW 90 JETTING

HIGH FLOW WATER PUMP
FLOW UP TO 150 L/MIN



Description

Dynaset HPW 90 convert the hydraulic power of a mobile machine into high flow. The design is reliable and compact piston-to-piston structure with no rotating parts unlike traditional water pumps.

The HPW 90 gives out 150 L/min. It can be used with sea water, natural water resources and a large variety of chemicals.

It can even dry run. If high flow is required, this pump is a very good option.

Typical Operations

- High Flow Water Pumping

Features

- Max pump flow 150 L/min
- Compact and low weight
- Can dry run
- Can run with numerous different fluids
- Adjustable output flow

SPECIFICATIONS

DYNASET HPW 90

General Technical Specifications

Type	Dynaset HPW 90
Part Number	HPW-090
Dimensions L x W x H	175 mm x 345 mm x 250 mm
Weight in air / submerged	~31 kg / ~25 kg

Hydraulic

Max Input Pressure	250 Bar
Max Output Pressure	90 Bar
Max Input Flow	85 L/min
Max Output Flow	150 L/min

Connection ROV Pressure	JIC #12
Connection ROV Return	JIC #12

Technical

Depth Rating	MSW 3000
--------------	----------