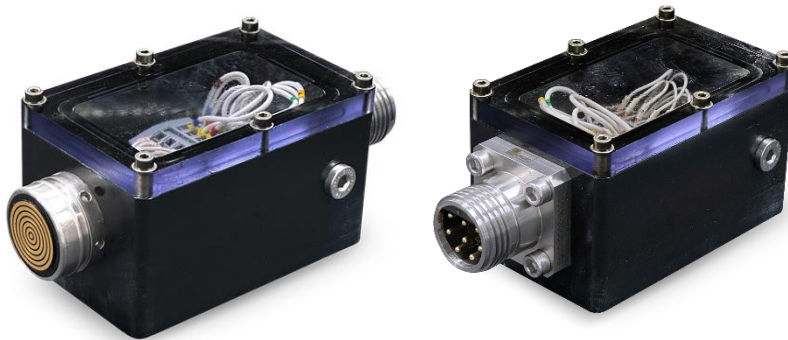


SEANET JUNCTION BOX

GLENAIR CABLE
TO SEANET CABLE
CONVERTER



Description

The Seanet Junction Box is used to make it simple and easy to use as an interface from Glenair Cables to Seanet Cables.

With a Glenair G5506-2008 male connector in one end and Seanet Connector in the other end.

Designed with the see-through glass to easily check the wiring inside.

Typical Operations

- Converter from Glenair to Seanet

Features

- Compact Design
- Compensated through Seanet connector
- Ports for optional external compensation
- Fill and bleed ports
- POM housing
- See through polycarbonate lid
- Terminal block for easier pin reconfiguration

SPECIFICATIONS

SEANET JUNCTION BOX

General Technical Specifications

Type	Junction Box
Part Number	117683
Dimensions L x W x H	170 mm x 75 mm x 75 mm
Weight	750 g

Hydraulic

Bleed and fill port dimension	1/8" BSP
-------------------------------	----------

Technical

Glenair connector PN	G5506-2008
Seanet connector PN	101-6087

